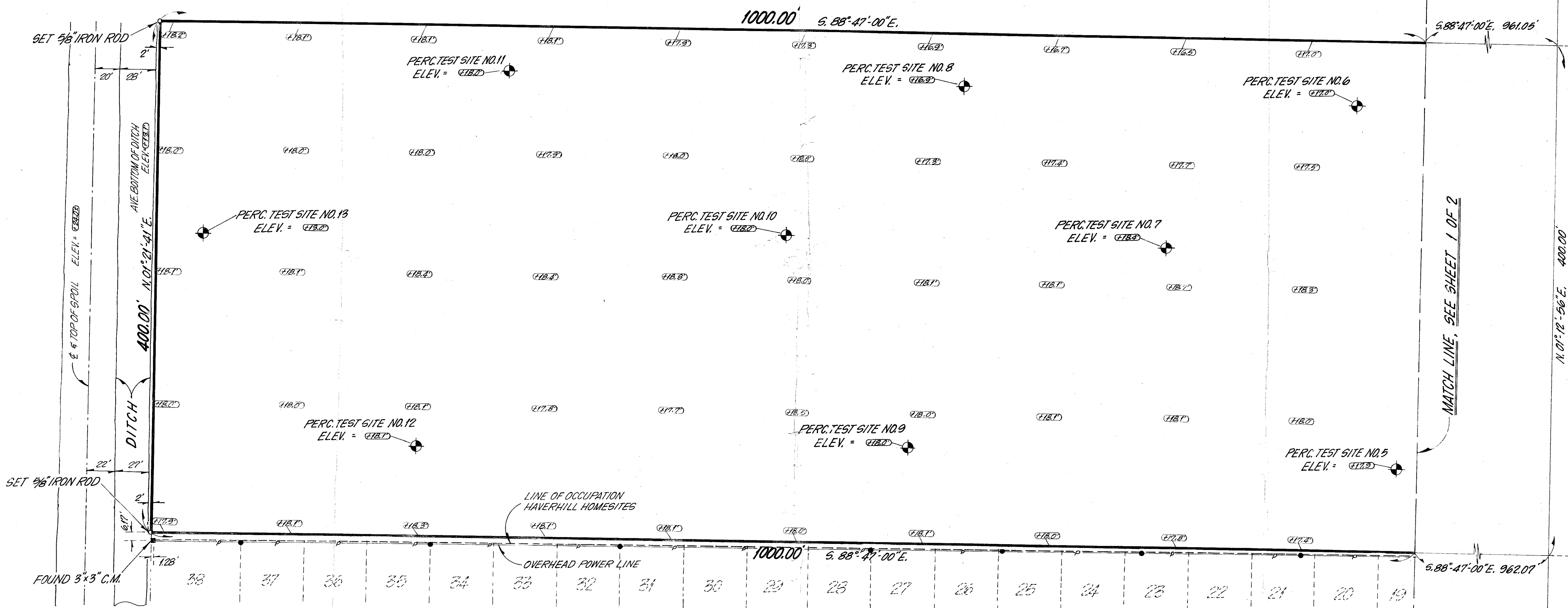


23 24
26 25



SURVEY PREPARED FOR & CERTIFIED TO:
JAN WOLFE

H A V E R H I L L H O M E S I T E S

PLAT BOOK 23, PAGE 24.

I HEREBY CERTIFY that the plat of survey shown hereon is a true and correct representation of the property description as furnished. Said Survey, made under my direction, is accurate to the best of my knowledge and belief, and contains no visible encroachments, unless shown.
I FURTHER CERTIFY that the survey represented hereon meets the minimum requirements adopted by the Florida Society of Professional Land Surveyors and the Florida Land Title Association.

*NOTE: 1. No search of the Public Records has been made by this office.
2. This survey is not valid unless sealed with an embossed Surveyor's Seal.

DATE: 23 APRIL 1979

R. J. F. [Signature]
DAILEY FOTOPNY, INC.
Professional Land Surveyor
Certificate No. 2297
State of Florida

NOTE: "ELEV." DENOTES RELATIVE ELEVATIONS IN FEET AND DECIMAL PARTS THEREOF BASED ON NATIONAL GEODETIC VERTICAL DATA.
• DENOTES POWER POLE

DWN.	C.M.H.	DATE	23 APRIL 1979
CHK.	C.M.H.	DWG. NO.	L-79-0098
REVISIONS:		SCALE	1" = 40'
		SHEET	7 OF 7

Dailey-Fotopny, inc.
land surveyors, planners, engineers
1028 So. Military Trail - West Palm Beach, Florida - 33406 Phone 305/965-8787
308 Taquesta Drive - Jupiter, Florida - 33458 Phone 305/746-8424

J & J BLUEPRINTERS, WEST PALM BEACH